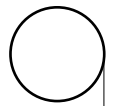
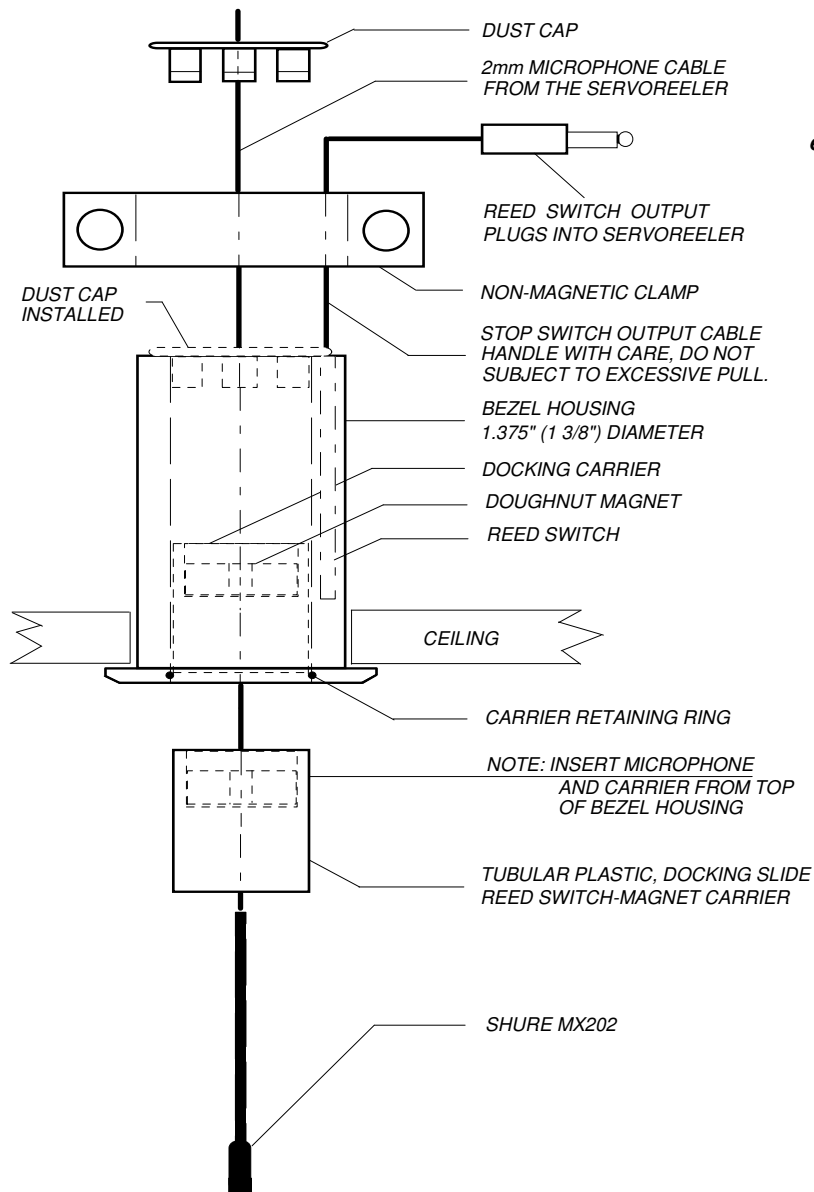


SERVOREELER SYSTEMS

XEDIT Corporation

218-31 Ninety Seventh Avenue
Queens Village, New York 11429
Web site: www.servoreelers.com
e-mail: srsystems@servoreelers.com
Tel: (718) 464-9400 Fax: 464-9435



TO INSTALL A CEILING BEZEL ASSEMBLY with a Shure MX202

1- Drill or carefully cut a clean round hole to accept the 1.375" (1-3/8") Diameter Bezel Housing through the ceiling tile. **Locate the hole in line with the cable exit point at the bottom of the Servoreeler** 2- Carefully shape the hole, keeping it as tight as possible, so that the Bezel flange will completely cover the cut edges. 3- Insert the Bezel assembly into the prepared hole; sliding the collar clamp over the top of the Bezel housing making sure to first pull the small control cable through the collar clamp and tightening the clamp screw with the ceiling tile tightly clamped between the Bezel flange and the collar clamp. When this is completed, the Bezel assembly should be securely mounted onto the tile. 4- Slip the MX202 Microphone and Docking slide into the bore of the Bezel, rotating the docking slide until the index slot engages the index pin inside the bezel body. 5- Confirm that the Bezel housing is clean and that the Docking slide moves freely up and down; then, 6- Slide the dust cap down, orienting it properly to clear the control cable outlet, snap into the top of the Bezel housing. 7- Pull the cable up activating the docking slide and release to assure its free motion. Finally: Plug the bezel switch cable into the jack at the top of the Servoreeler and perform an operational test to assure that the bezel switch is controlling the reeler stop point reliably; hard or shallow docking may be adjusted by trimming the reeler retraction speed. Make sure that the Servoreeler is mounted far enough away from the Bezel, so that the Servoreeler Full Limit sensor does not stop the Reeler before the Bezel switch can activate. The full limit stop point may also be trimmed by adjusting the multi-turn full limit adjustment on the Servoreeler control board. Refer to Reeler installation instructions if this is required. It is preferable to simply note the cable length to the microphone prior to installing the Reeler and selecting a mounting position a few inches longer than this dimension.

TEST THE INTERNAL REED SWITCH: Slide the docking slide toward the top of the Bezel housing; contact closure should begin just after about 1.75" of upward travel of the docking slide.

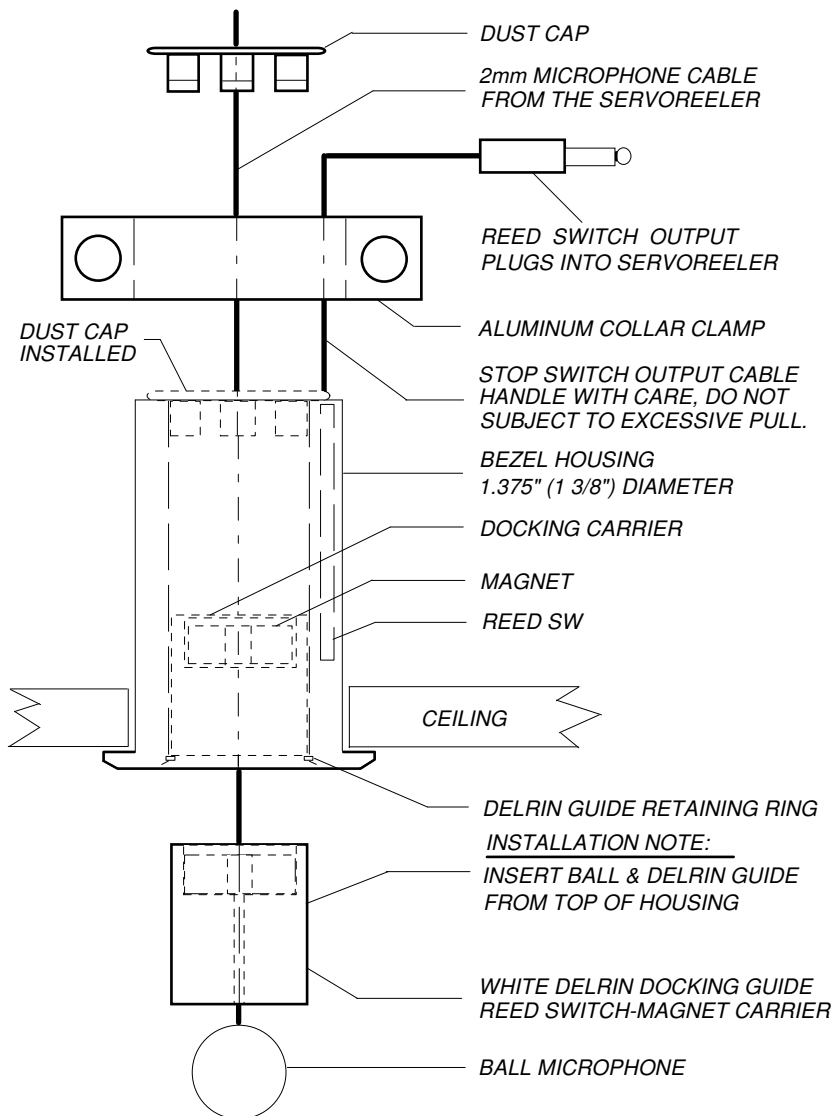
NOTE: It is highly recommended that the area around and above the Bezel assembly be vacuumed before and after the installation to assure that any possible debris and solid contaminants are removed. Obviously, any debris infiltrating into the Bezel could impair its movement and possibly prevent normal reeler shutoff. In addition, please note that the Docking slide contains a small reed switch activating magnet. This magnet will attract metal fillings, therefore it is important to double check that the area is clean and that the slide is absolutely free to move.

BE CERTAIN THAT THE MOVING MICROPHONE CABLE DOES NOT ABRABE AGAINST ANY STRUCTURE.

SERVOREELER SYSTEMS

XEDIT Corporation

218-31 Ninety Seventh Avenue
Queens Village, New York 11429
Web site: www.servoreelers.com
E-mail: srsystems@servoreelers.com
Tel: (718) 464-9400 Fax: 464-9435



TO INSTALL A CEILING BEZEL ASSEMBLY WITH A BALL MICROPHONE:

- 1- Drill or carefully cut a clean round hole to accept the 1.375" (35mm) Diameter Bezel Housing through the ceiling tile. **The cable exit point at the bottom of the Servoreeler must be in direct line with the centerline of the bezel.**
 - 2- Carefully shape the hole, keeping it as tight as possible, so that the Bezel flange will completely cover the cut edges.
 - 3- Insert the Bezel assembly into the prepared hole: slide the collar clamp over the top of the Bezel housing, making sure to first pull the small control cable through the collar clamp and tighten the clamp screw with the ceiling tile tightly clamped between the Bezel flange and the collar clamp. When this is completed, the Bezel assembly will be securely mounted onto the tile.
 - 4- Slip the Ball Microphone and docking slide into the bore of the Bezel, allowing this assembly to drop against the internal stop ring.
 - 5- Confirm that the Bezel housing is clean and that the docking slide moves freely up and down.
 - 6- Slide the dust cap down, snapping it into the top of the Bezel housing.
 - 7- Pull the cable up activating the docking slide and release to ensure its free motion.
- CAUTION: Avoid excessive pull on the Bezel Switch cable during the installation. Dress the switch cable so that it is secured away from the path of the moving microphone cable.**

Finally: Plug the bezel switch cable into the jack at the top of the Servoreeler and perform an operational test to ensure that the bezel switch is controlling the reeler stop point reliably; hard or shallow docking may be adjusted by trimming the reeler retraction speed.

Make sure that the Servoreeler is mounted far enough away from the bezel, so that the Servoreeler internal full limit sensor does not stop the Reeler before the Bezel switch can activate. **It is preferable to simply note the cable length to the microphone prior to installing the Reeler and selecting a mounting position a few inches further from the bezel than this reference dimension.**

The full limit stop point may also be trimmed by adjusting the multi-turn full limit adjustment on the Servoreeler control board. Refer to the Servoreeler installation instructions if this is required.

TEST THE INTERNAL REED SWITCH: Slide the docking slide towards the top of the Bezel housing; contact closure should begin just after about 1/4 inch of upward travel of the docking slide. **NOTE:** It is highly recommended that the area around and above the Bezel assembly be vacuumed before and after the installation to assure that any possible debris and solid contaminants are removed. Obviously, any debris infiltrating into the Bezel can impair its movement and possibly prevent normal reeler shutoff. In addition, please note that the Docking slide contains a reed switch-activating magnet. This magnet will attract metal fillings. It is therefore important to double check that the area is clean and that the slide is absolutely free to move.

*BE CERTAIN THAT THE MOVING MICROPHONE CABLE DOES NOT ABRASE AGAINST ANY STRUCTURE.
Should you have any questions, please call us at: (800) 431-8900*

SERVOREELER SYSTEMS

XEDIT Corporation

218-31 Ninety Seventh Avenue

Queens Village, New York 11429

Web site: www.servoreelers.com

e-mail: srsystems@servoreelers.com

Tel: (718) 464-9400 Fax: 464-9435

BZ-3 Preliminary Instructions

The new BZ-3 Ceiling Bezel is designed to accept the Polycom - HDX Multi capsule ceiling microphone. Please refer to the normal Bezel instruction sheet for general Bezel installation instructions.

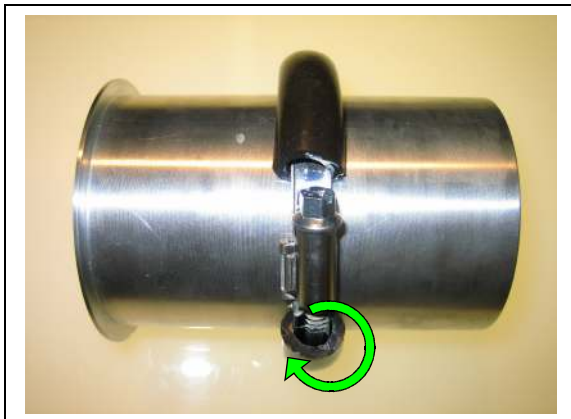
Please examine the following photos for reference.



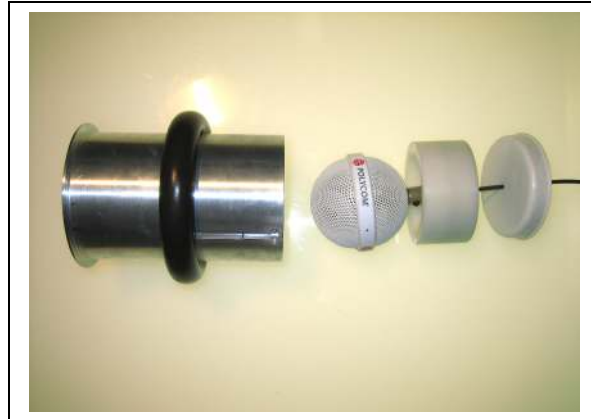
Strap Clamp



Microphone – Slide / Magnet carrier / dust cap



Rolling the strap clamp onto the Bezel

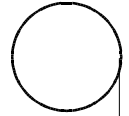


BZ-3 showing entry sequence of components

- 1- The hole size for the BZ-3 is 2.625"
- 2- The normal aluminum clamp has been replaced with a cushioned strap clamp.
- 3- The strap clamp is best installed by evenly pushing it onto the top of the BZ-3; rolling the black tubing material; without opening the clamp. The tubing will basically "roll" onto the barrel of the BZ-3. (Please see photo above)
- 4- With someone pushing the bezel tightly against the ceiling from inside the room, push and "roll" the closed strap clamp down tightly against the ceiling material; then tightening the clamp in place. Make sure that the Bezel is pulled tightly to the ceiling and that the clamp is firmly tight.

NOTE: The white bezel slide/magnet carrier is stored inside the BZ-3 body for shipping. It is retained at the flange end by a retaining ring, but can slide out the top. Take care when unpacking not to let the "slide" fall out and possibly be damaged. Prior to assembly as shown above, insert the magnet carrier into the bezel and make sure that it free to move inside the bore. Clean the bore so that it is free of any debris.

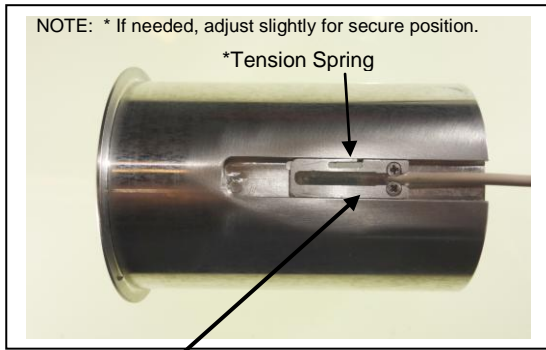
Please call us if you have any questions: 800-431-8900



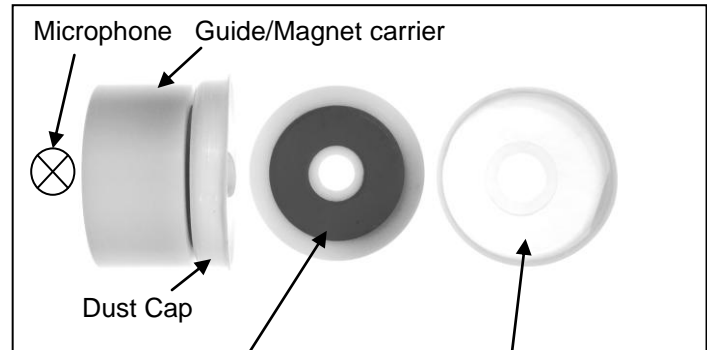
BZ-3a **With adjustable limit switch feature.*

Installation Instructions

The new BZ-3 Ceiling Bezel is designed to accept various Multi Capsule Ceiling Microphones such as; The Polycom HDX - ClearOne Ceiling Microphone Array - Audix M3 or other larger microphone. This Bezel also provides a new function that permits a final trim of the microphone when retracted inside the bezel. This adjustment trim can be performed from inside the room – using the “Hook” adjustment tool as shown below. Deploy the microphone out of the way, push the guide up to reveal the adjustment slot; engage the hook end into the limit switch carrier; push up to allow the microphone more entry or pull the carrier down to stop the microphone sooner. Try small increments until desired docking is achieved. See photos below.



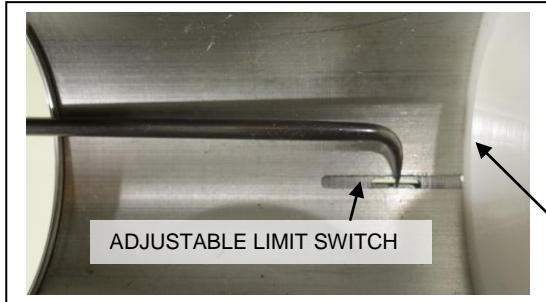
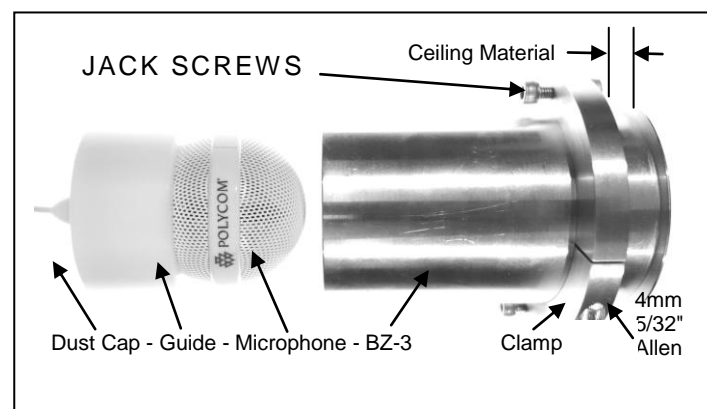
ADJUSTABLE RETRACT - LIMIT SWITCH CARRIER



Slide-Guide / Magnet carrier / dust cap



RETRACT LIMIT SWITCH ADJUSTMENT TOOL



RETRACTION ADJUSTMENT FROM INSIDE THE ROOM AFTER INSTALLATION AS SHOWN ABOVE

PROCEDURE: DEPLOY THE MICROPHONE FOR ACCESS TO THE BEZEL INTERIOR. AT THE CEILING, PUSH THE WHITE DELRIN GUIDE UP UNTIL THE SMALL SIDEWALL ADJUSTMENT SLOT IS VISIBLE. TO MOVE THE MIC. MORE OR LESS INTO THE BEZEL, ENGAGE THE SW. CARRIER WITH THE HOOK TOOL - MOVE THE SWITCH CARRIER UP OR DOWN LITTLE AT A TIME UNTIL THE MIC. DOCKS AS REQUIRED.

The hole size for the BZ-3 is 2.625" Pushing the bezel firmly against the ceiling from inside the room, slide the clamp down - tightly against the ceiling material; tightening the clamp to the Bezel then carefully tighten the two Jack Screws to remove any slack remaining by pulling the Bezel tightly against the inside ceiling.

NOTE-1: The white bezel slide/magnet carrier is stored inside the BZ-3 body for shipping. It is retained at the Flange end by a retaining ring, but can slide out the top. **NOTE:** Please take care when unpacking not to let the White Slide-Guide fall out and possibly be damaged. Prior to assembly as shown above, insert the Microphone followed by the magnet carrier into the top of the bezel making sure that it is free to move inside the bore. Clean the bore to remove any debris.

NOTE-2: If the white slide is not free to move inside the bezel bore, if possible eliminate any dents, adhesive or other foreign material impeding smooth movement. If the guide is damaged, please call for a free replacement.

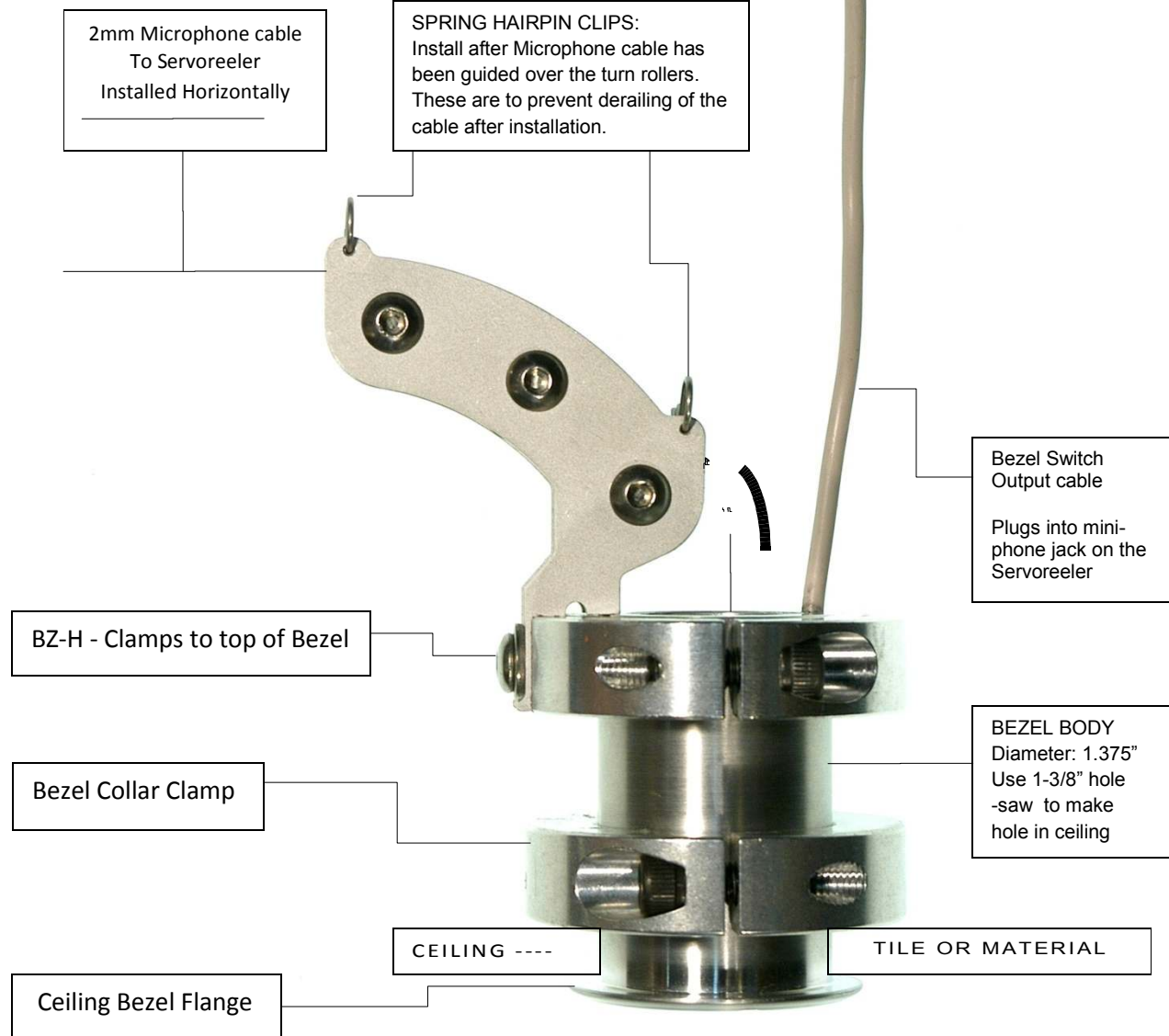
Should you have any questions, please call: 800-431-8900 or 718-464-9400



BZ-H

BEZEL HORIZONTAL ADAPTER

BZ-3 ADAPTER Align the BZ-3 Adapter bracket slot with the slot on the BZ-H Clamp. In that manner, when the BZ-H Clamp is tightened, the adapter bracket will also be tightened onto the top of the BZ-3 barrel.



**SERVOREELER
SYSTEMS**
XEDIT Corporation
218-31 Ninety Seventh Avenue
Queens Village, New York 11429
Web site: www.servoreelers.com
e-mail: srsystems@servoreelers.com
Tel: (718) 464-9400 Fax: 464-9435

Install the BZ-H adapter after the microphone, white bezel guide and dust cap are inserted into the bezel bore. The BZ-H adapter clamps to top of an installed Bezel to turn the cable path 90° when overhead clearance is too limited for normal vertical mounting of the Servoreeler. Employing the BZ-H permits the Servoreeler to be installed horizontally significantly reducing the required overhead clearance from about 16" total including connectors, to approximately 3".

The BZ-H employs the same clamp that is used to install the Ceiling Bezel. This clamp is simply fitted to the top of the installed bezel, pushing it down onto the bezel body until it seats against its stop. Rotate the adapter so that the cable is aimed directly towards the cable exit point on the Servoreeler; then tighten the Allen cap screw. The Servoreeler must be installed so that the moving cable will not rub against any stationary surfaces; friction could impair normal Servoreeler operation and this could also result in abrasion of the cable and eventually permanent damage to the cable jacket.

Please call us for support should you have any questions about this adapter: 800-431-8900

SERVOREELER SYSTEMS

XEDIT Corporation

218-31 Ninety Seventh Avenue

Queens Village, New York 11429

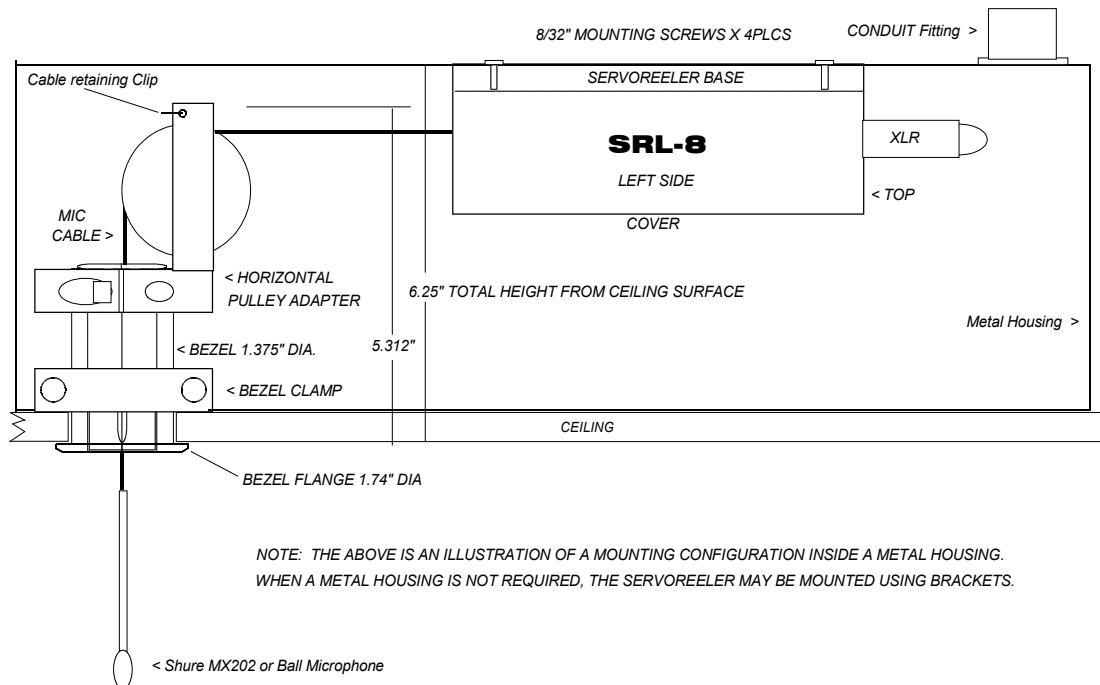
Web site: www.servoreelers.com

e-mail: srsystems@servoreelers.com

Tel: (718) 464-9400 Fax: 464-9435

Horizontal Pulley Adapter INSTRUCTIONS

DESCRIPTION: The horizontal pulley adapter is provided for use with our BZ-1 ceiling Bezel. It is intended for use when the space over the ceiling is too confined to install a Servoreeler in the normal vertical orientation. It is employed as drawn below by clamping to the top of the BZ-1. Its use permits the Servoreeler to be mounted in a horizontal orientation anywhere within a 360 degree circle of the bezel center. The Servoreeler needs to be mounted at a height or angle that will permit a direct path from the turn pulley to the Cable entry/exit point on the Servoreeler. The Servoreeler may be mounted in any orientation so long as this alignment is achieved. In the example below, the SRL-8 is mounted inside an optional metal enclosure when conduit fittings are required. Many other configurations are possible.



INSTALLATION of the Horizontal Pulley adapter:

- 1- Follow the instructions for the installation of the Bezel assembly.
- 2- Please note that the Servoreeler contains internal limits so that when its storage reel is full, it stops automatically-leaving a length of cable between the housing and the microphone. Measure this length and be sure that the distance between the Servoreeler and the Bezel is greater than this measurement. This will permit the limit switch in the Bezel to take priority in stopping the microphone when it is retracted.
- 3- Remove and save the cable retaining clip at the top of the pulley support.
- 4- Move the black magnet carrier and dust cap close to the microphone and then pass these three components through the top (pulley side) of the adapter assembly in the following order: Microphone, Magnet carrier, Dust cap.
- 5- Moving the Horizontal pulley adapter to the side, pass these same components into the top of the Bezel. Allow the white magnet carrier to drop and stop against the internal retaining ring; install the dust cap into the top of the bezel; then slip the Horizontal adapter assembly clamp down onto the top of the bezel as far as it will go.
- 6- Tighten the adapter clamp orienting the adapter pulley directly towards the Servoreeler.
- 7- Drape the microphone cable over the pulley and insert the cable retaining clip so that the cable is captive under it and cannot derail due to a loss of tension.
CAUTION: Be certain to plug the sensor cable from the Bezel into the jack on the Servoreeler prior to testing operation. Make certain that the cable has a clear, clean path and will not bind or abrade against any stationary object when in motion.

Should you have any questions, Please Call us at: 800 431-8900